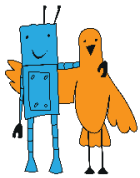


## «LINE FOLLOWER» CONTEST RULES «LINE FOLLOWER FOR INTERMEDIATES. PREMIER LEAGUE» CATEGORY

*Version 1.0 dated July 20, 2017*

### Contents

1. Specifications of the field and lines .....	2
2. Requirements for the Robot .....	2
3. Contest procedure.....	2
4. Scoring .....	2
5. Revision History.....	3



## 1. Specifications of the field and lines

General requirements for the field and lines are given in the general contest rules.

There are the following specifications of the "Line follower for intermediates.

Premier League" category:

line width: 50 mm

radius of curvature: not less than 300 mm

Start and finish lines are marked in yellow.

## 2. Requirements for the Robot

General requirements for the robot are given in the general contest rules.

There are the following specifications of the robot in the "Line follower for intermediates. Premier League" category:

length: not more than 40 cm;

width: not more than 40 cm;

weight: not more than 10 kg.

## 3. Contest procedure

General contest procedure are given in the general contest rules.

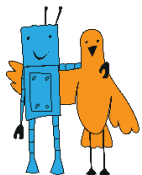
In order to complete one attempt the robot is given 30 seconds.

The line may be left only tangentially from the outside, provided the length of the section which the robot passes tangentially does not exceed three lengths of the robot

body. If the robot loses the line for more than 5 seconds, it should be disqualified.

## 4. Scoring

The scoring is given in the general contest rules. Robot of the competition participant starts and finishes on the same start position.



## 5. Revision History

<b>№</b>	<b>Doc. No.</b>	<b>Date</b>	<b>Note</b>	<b>Previous version</b>	<b>Update version</b>
<b>1</b>	<b>2</b>	<b>3</b>	<b>4</b>	<b>5</b>	<b>6</b>
1.					
2.					
3.					
4.					
5.					
6.					
7.					
8.					
9.					
10.					
11.					
12.					
13.					
14.					
15.					