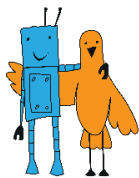


«SUMO» CONTEST RULES «MINI-SUMO 10x10» CATEGORY

Version 1.0 dated July 20, 2017.

Contents

1. Requirements for the robots	2
2. Requirements for the sumo ring	2
3. Order for the sumo ring	2
4. Match time.....	2
5. Awarding of points	2
6. Revision History.....	3



1. Requirements for the robots

General requirements for robots are given in the general contest rules. There are the following additional requirements in the “Mini-sumo 10x10” class:

height - unlimited;

width- not exceed 10 cm;

length-not exceed 10 cm;

mass-not exceed 500 g.

2. Requirements for the sumo ring

General requirements for the sumo ring are given in the general contest rules. There are the following additional requirements in the “Mini-sumo 10x10” class:

height – 2,5 cm;

diameter - 77 cm;

width border - 2,5 cm;

minimum external space - 50 cm.

3. Order for the sumo ring

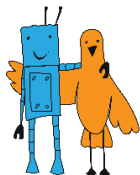
Order of the match is given in the general contest rules

4. Match time

Match time is given in the general contest rules

5. Awarding of points

Awarding of points in the general contest rules



6. Revision History

№	Doc. No.	Date	Note	Previous version	Update version
1	2	3	4	5	6
1.					
2.					
3.					
4.					
5.					
6.					
7.					
8.					
9.					
10.					
11.					
12.					
13.					
14.					
15.					